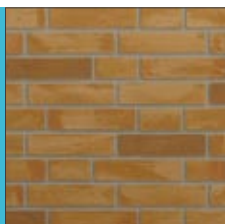
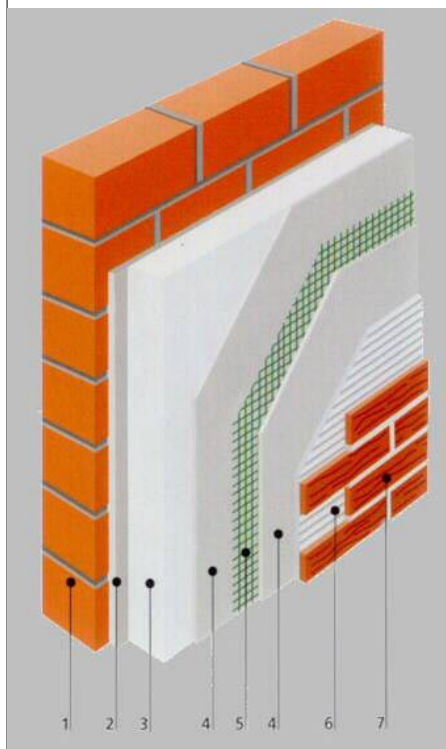


Traditional Finishes - Acrylic Brick Slips

Renders & Finishes



Acrylic Brick Slips sequence of layers with Thin Coat External Wall Insulation system.



1. Substrate
2. Levelling mortar (if required)
3. Insulation
4. Base coat render
5. Polypropylene reinforcing mesh
6. Primer and acrylic slip adhesive
7. Acrylic brick slips

Characteristics

Struchterm's range of Acrylic Brick Slips combine technology and traditional appearance to offer a high quality facade. Acrylic Brick Slips are lightweight (6kg/m²) and flexible, creating an ideal finish for our External Wall Insulation (EWI) systems and our unique Structural External Wall Insulation (SEWI) system.

The diagram opposite shows a typical system build up with our high build EWI system consisting of a layer of insulation, basecoat render, reinforcing mesh and the decorative Acrylic Brick Slip finish. For more information about our EWI and SEWI systems, please refer to the respective datasheets.

Benefits

- Faster and easier installation than traditional masonry.
- Lightweight and flexible brick slips enable overcladding of entire buildings.
- Achieves natural, traditional appearance of brick.
- Each design contains natural shades and textures, as found with real brick finishes.
- 24 Standard colours (see overleaf).
- Can be colour matched to any brick.
- Standard UK size 65 x 215mm.

Application Procedure



Apply adhesive using a serrated trowel 6mm deep with 4mm gaps.



Preformed pistol slips are used for corners.



Embed the brick slips fully into the adhesive. The joints should be 10-12 mm wide.



The flexible slips can easily be cut.



Smooth the joints with a damp paintbrush making sure that the brick slips are fully embedded on all sides.

Standard Acrylic Brick Slip Colour Range

Our high quality acrylic brick slips are available in 24 colours / designs (see images below) and are complimented by 5 standard adhesive / mortar colours. All our acrylic brick slips come in standard UK sizes of 65mm x 215mm.



E6000 Dark Red Multi



E6001 Light Brown Multi



E6002 Light Beige



E6003 White



E6005 Red Multi



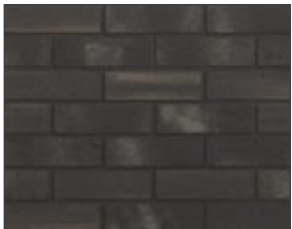
E6006 Light Grey



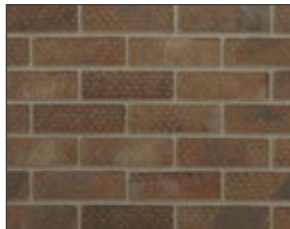
E6007 Light Red Multi



E6008 Dark Red Rustic



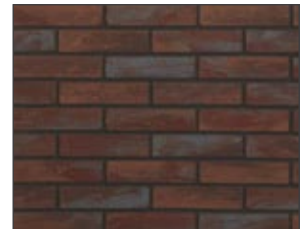
E6009 Grey Rustic



E6010 Blended Multi Beige



E6011 Beige Multi



E6012 Blended Multi Red



E6013 Brown / Black Multi



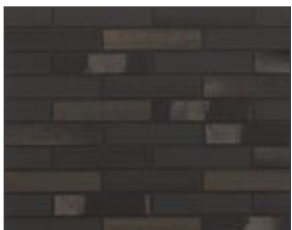
E6018 Golden Multi



E6019 Dark Red



E6020 Terracotta



E6021 Grey Multi



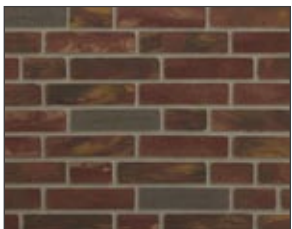
E6022 Blended Multi



E6023 Light Beige Multi



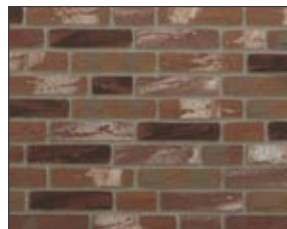
E6024 Dark Brown Multi



E6025 Blended Multi Stock



E6029 Dark Blue



E6030 Blended Multi Rustic



E6031 Buff Multi

Standard Adhesive / Mortar Colours



White



Grey



Anthracite



Light Grey



Brown

Structherm Ltd is part of the Hanson-HeidelbergCement Group

Structherm Ltd, Bent Ley Road, Meltham, Holmfirth, West Yorkshire, HD9 4AP

t: 01484 850098 f: 01484 851388 e: info@structherm.co.uk www.structherm.co.uk

